



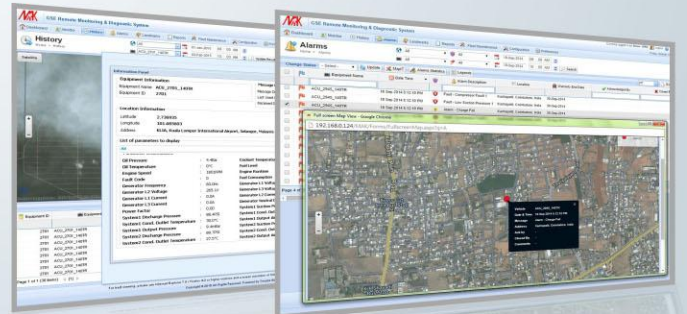
# MAK RDMS

GSE-REMOTE DIAGNOSTIC AND MONITORING SYSTEM



**GPU\_2772\_90KVA TIER4 AC DC**

DATE & TIME	:9 SEP 2016; 12:10PM
MESSAGE	:PARAMETER BROADCAST
ADDRESS	:DENVER INTL. AIRPORT, DENVER
UNIT RUN HOURS	:196:20:00



EMPOWER YOUR GSE TEAM WITH THIS CUTTING EDGE TECHNOLOGY

# AIR+MAK INDUSTRIES INC., USA



info@airmak.com



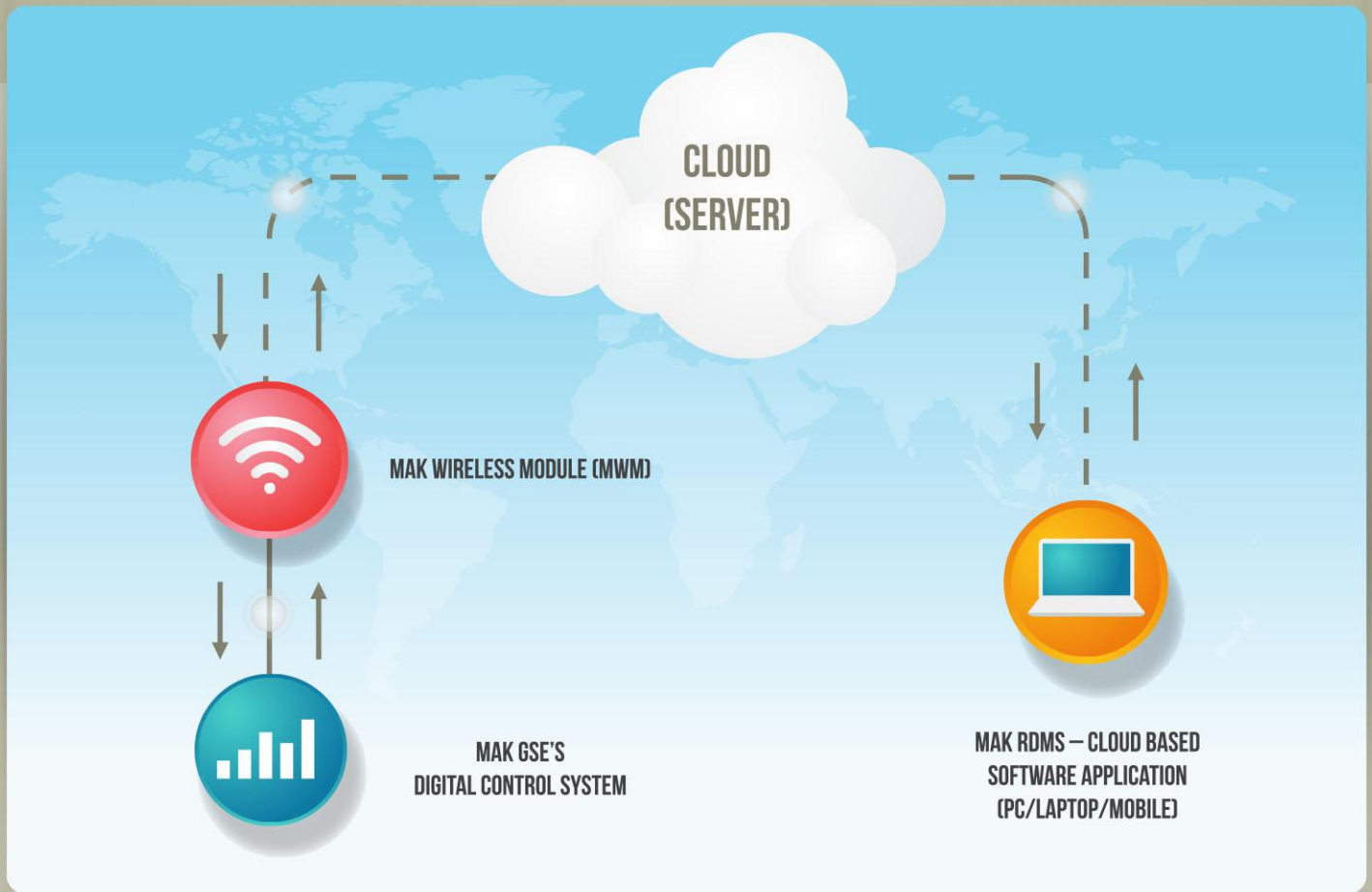
www.airmak.com



+1 662 893 3444

# MAK RDMS

## FUNCTIONAL ARCHITECTURE



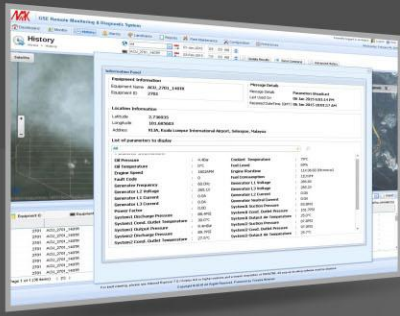
## GSE OPERATION, MAINTENANCE & SERVICE :



### WHAT IS NEEDED?

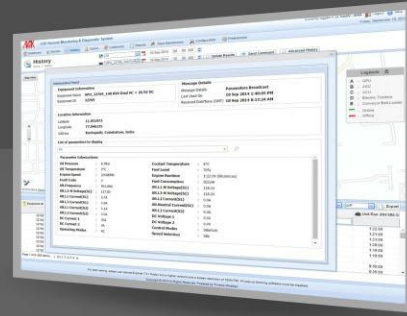
- Easy and quick interpretation of comprehensive operational data.
- Acquire complete information in a single touch.
- Increased outputs & enhanced productivity from every technician.
- Real-time fault notification vide email/online.
- Geo-location of active/inactive equipment.
- Recent O&M history available at all times.
- All operational and maintenance history to be digitized
- Remote management of MAK GSE with rudimentary adjustments
- Automated periodic updating of GSE on email/online.

# WHAT RDMS OFFERS?



## HISTORY : DETAILED STATUS OF GSE

- Data filter based on equipment/calendar period/time
- Equipment's live/last received geo-location with timestamp
- Complete operational history
- Equipment run hours visible at all times
- Snapshot broadcast - Monitor immediate operational behavior before, during and after any fault.



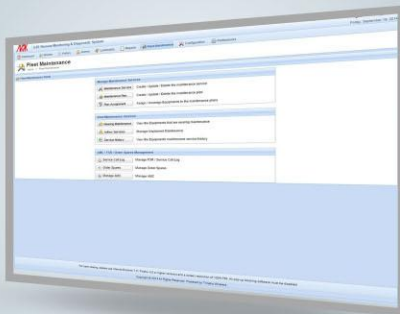
## LIVE MONITORING & CONTROL OF GSE : EXCELLENT DIAGNOSTIC TOOL

- Talk to GSE from anywhere in the Globe
- Remote fault diagnosis tool
- Fine tune specific parameter limits
- Get live operational parameter update every few seconds.
- Helpful during crisis monitoring



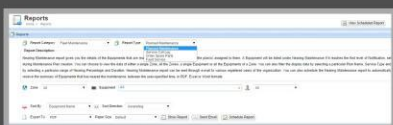
## ▶ FAULT & ALARMS

- Real-time fault alert with location & timestamp.
- View complete fault history of selected equipment.
- View/modify fault status – Pending, acknowledged, closed
- View warranty status of equipment.
- Receive fault alerts via email/online



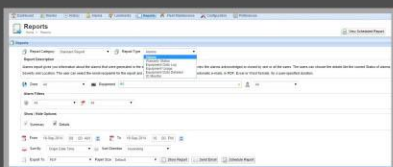
## ▶ GSE MAINTENANCE: COMPLETE MANAGEMENT

- OEM recommended periodic maintenance schedules.
- Planned cost, maintenance time and required spares
- Real-time maintenance alerts via email/online
- Ad-hoc service management - with fault service record
- AMC schedule management - For 3/5/7 years



## REPORTS : DATA REPORTS

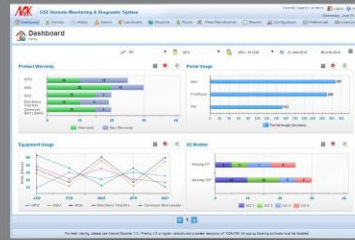
- Export complete Operational & maintenance data as drilled down reports.
- Data filter based on equipment/calendar period/time
- Select multiple equipment data in single report.
- Scheduled reports to mail inbox



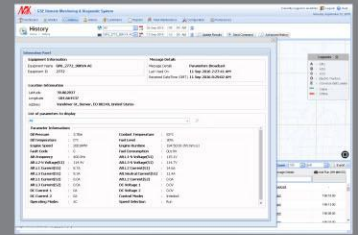


# GSE REMOTE DIAGNOSTIC AND MONITORING SYSTEM

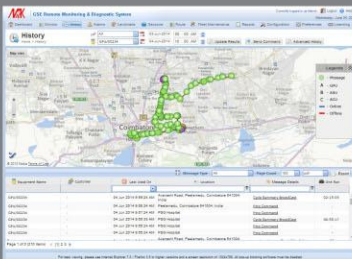
DASHBOARD



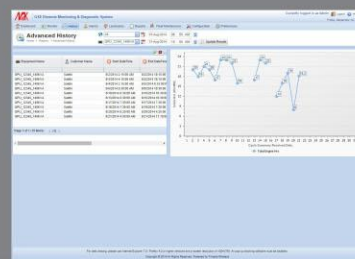
OPERATIONAL PARAMETERS



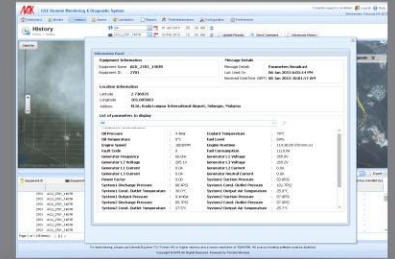
EQUIPMENT GEO LOCATION



EQUIPMENT USAGE CYCLE



REMOTE DIAGNOSTIC SCREEN



...and more

MAK GSE MONITOR V8.2 WITH MAK WIRELESS MODULE - STANDARD ACROSS MAK GPU, ASU & ACU



ONE STOP DESIGN AND SYSTEM INTEGRATION HOUSE FOR ALL YOUR ENGINEERING NEEDS

## AIR+MAK INDUSTRIES INC., USA

11154, Wildwood Drive, Olive Branch, MS-38654, USA



+1 662 893 3444



info@airmak.com



www.airmak.com