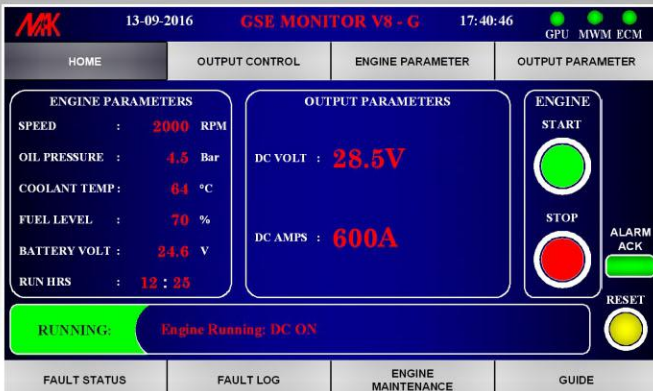




GROUND POWER UNIT

28.5V DC GPU

SMART & FUTURISTIC GSE



AIR+MAK INDUSTRIES INC., USA



info@airmak.com



www.airmak.com



+1 662 893 3444

TECHNICAL SPECIFICATION

SUB SYSTEMS

ENGINE	:Cummins/Deutz/Isuzu or equivalent diesel engine Upto Tier 4 Final
ALTERNATOR	:MAK brushless 3phase constant low voltage alternator with in-built MAK AVR
INSULATION	:Class H
RECTIFIER	:12 Pulse Rectifier

OUTPUT CHARACTERISTICS

DC OUTPUT VOLT	:28.5V
POWER	:11.4kW/17.1kW/22.8kW
VOLTAGE REGULATION	:±1%
CONTINUOUS CURRENT	:400A/600A/800A
AIRCRAFT STARTING CURRENT	:1500A/2000A
RIPPLE AMPLITUDE	:<1.5V @ Full Load

CONTROL PANEL - MAK GSM-V8

Hi-Tech control system with touch screen GUI

SPECIAL FEATURES

Remote Diagnostics and Monitoring System (RDMS)

MONITORING

Following parameters are displayed through GUI touch screen on a graphical format for quick understanding

- Engine lube oil pressure
- Engine coolant temperature
- Engine RPM
- Fuel level
- Engine hours run
- Battery voltage
- Output voltage
- Load current
- Maintenance Schedule

OPERATIONAL PROTECTIONS

A. For Engine

- Low lube oil pressure shutdown
- High coolant temperature shutdown
- Over speed shutdown
- Low fuel warning & shutdown
- Charge fail warning

B. For Output

- Under voltage trip
- Over voltage trip
- Over load trip

ONE STOP DESIGN AND SYSTEM INTEGRATION HOUSE FOR ALL YOUR ENGINEERING NEEDS

AIR+MAK INDUSTRIES INC., USA

11154, Wildwood Drive, Olive Branch, MS-38654, USA



+1 662 893 3444



info@airmak.com



www.airmak.com